

Outdoor MOXS™ Cross-Connect System

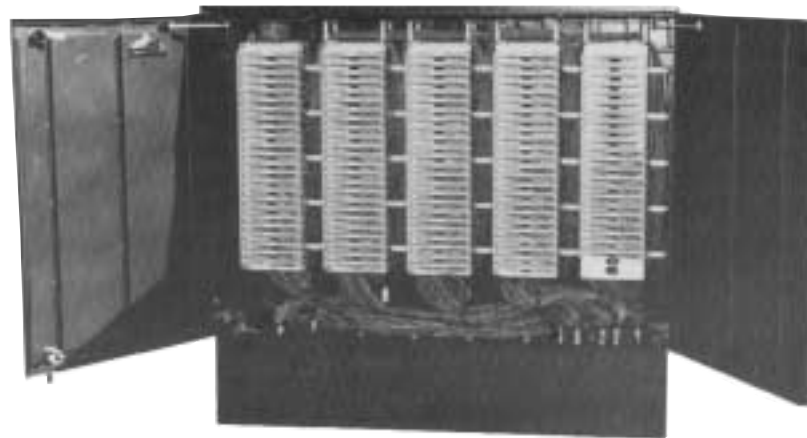


Photo
OP-006

Features/Benefits

- Rugged, weather-protected aluminum cabinet on a painted, galvanized steel base
- A family of interfaces for pole, pad, or stake mounting
- Single-sided front access cabinets
- Sealed cabinet bottom-no pea gravel
- Variable ratio of feeder-to-distribution pairs
- Individually enclosed cable channels protect binder groups
- Multi-purpose use: cross-connections, splices, and electronics can be housed in the same cabinet
- Universal connection tool
- Widely-used test probes and test connectors
- Connector replacement without service interruption
- Wall-mountable for indoor use
- Color-coded retainers for easy identification of feeder and distribution pairs
- Snap-in plastic designation labels
- Compatible with the DMS-1 Urban and Outside Plant Modules

Description

Corning Cable Systems announces the Outdoor MOXS™ Cross-Connect System — a family of interfaces for interconnecting feeder and distribution cables in the urban and rural outside plant copper-based network.

MOXS Cross-Connect System had no loss in insulation resistance after 760 hours of salt fog testing. Low insulation resistance caused by corrosion results in noisy circuits and the eventual loss of a cable pair — which equates to poor service for your customers and increased maintenance costs for you. MOXS Cross-Connect System is designed to overcome this common problem found in other outdoor cross-connects.

For example, comparative tests were performed with two competitive products commonly available on the market. They were tested at the same time and under the same weather conditions. Here are the results:

Standard 5% Salt Fog Solution Test

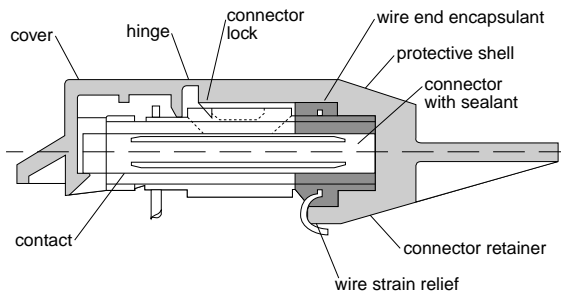
| Product | Time To 10% Failures | Time To 50% Failures |
|---|--|----------------------|
| Typical Insulation Displacing Connector | 6-15 hours | 35-65 hours |
| Typical Binding Post Connector | 15-30 hours | 75-150 hours |
| Outdoor MOXS Cross-Connect System | All samples were failure-free after 760 hours of testing (1 hour = 1 month in the field) | |

Note: A failure is defined as a drop in insulation resistance below 100 Mohms on any connection in the test sample.

The weather-protected MOXS™ Cross-Connect System connector includes a protective sealant inside the connector and a protective covering for the outside of the connector. Together, they will keep the cable connections dry. No tracks to the inside compartment of the retainer and vertical cable entry positions ensure that moisture does not migrate into the contact area.

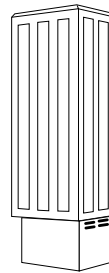
The retainer is equipped with a unique safeguard: a cover that always remembers to close, even when someone forgets.

MOXS Cross-Connect System has a slim shape with vertical ribbing all around and a dark brown color that blends into any background.

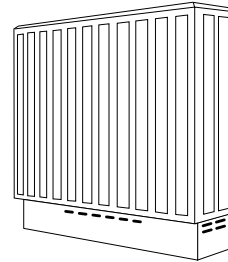


ZA-782

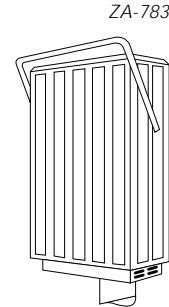
End View Of Connector And Retainer



600-Pair
Cabinet



3000-Pair
Cabinet



1200-Pair
Cabinet

OUTDOOR MOXS CROSS-CONNECT SYSTEM CABINET APPLICATION AND DIMENSIONS

| Capacity (Pairs) | Type of Mounting | Height mm (in) | | Width mm (in) | Depth mm (in) |
|---------------------|---------------------|------------------|------------------|------------------|------------------|
| | | Standard Base | Extended Base | | |
| 600 | Pad or Stake | 1334 (52.5) | 1794 (70.6) | 424 (16.7) | 297 (11.7) |
| 1200 | Pad or Stake | 1334 (52.5) | 1794 (70.6) | 688 (27.0) | 297 (11.7) |
| 1800 | Pad | 1334 (52.5) | 1794 (70.6) | 952 (37.5) | 297 (11.7) |
| 3000 | Pad | 1334 (52.5) | 1537 (60.5) | 480 (58.0) | 297 (11.7) |

| Capacity (Pairs) | Type of Mounting | Height mm (in) | | Width mm (in) | Depth mm (in) |
|---------------------|---------------------|----------------|--|------------------|------------------|
| | | (no base) | | | |
| 600 | Pole | 1105 (43.5) | | 424 (16.7) | 297 (11.7) |
| 1200 | Pole | 1105 (43.5) | | 688 (27.0) | 297 (11.7) |
| 1800 | Pad | 1447 (57.0) | | 688 (27.0) | 297 (11.7) |

